

RVH8215

TOPMOUNT WORKSTATION SINK

RUVATI®
SPECIFICATION SHEET

MATERIAL

- True 16 Gauge Thickness
- Premium T304 Grade Stainless Steel
- Nano-PVD colored finish: easy to clean and long lasting

FEATURES

- Heavy duty sound guard padding and undercoating
- Slanted bottom with elegant drain grooves for easy draining
- Single-Tier Ledge for Accessories

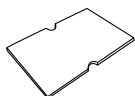


COLOR OPTIONS

BL: Gunmetal Black

GG: Matte Gold

IN THE BOX



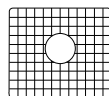
Cutting Board
[RVA1215]



Basket Strainer
[RVA1022BL/GG]



Mounting Clips
[RVA11048]



Rinse Grid
[RVA68215]



Cut-out
Template

NOMINAL DIMENSIONS

Exterior: 15" (wide) x 15" (front-to-back)

Interior Bowl: 11½" (wide) x 11" (front-to-back)

Bowl Depth: 9"

Minimum Cabinet Size: 18" wide

Drain Hole Size: 3½"

Installation Type:
Topmount

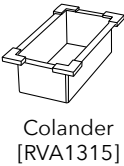
Inside Corners:
Rounded

Drain Location:
Center

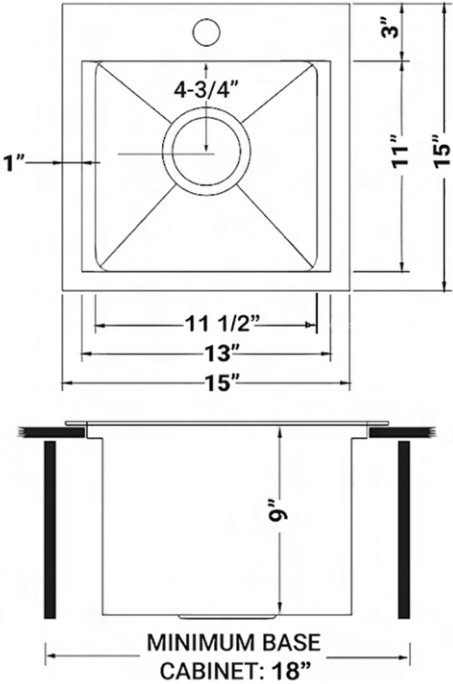
RUVATI USA
www.ruvati.com

Phone: 1.855.478.8284
Email: support@ruvati.com

OPTIONAL ACCESSORIES (SOLD SEPARATELY)



DIMENSIONS





cUPC certified by IAPMO
to meet US and Canada
plumbing standards.



**SCAN TO REGISTER
YOUR WARRANTY**

or visit
ruvati.com/register