

RVH8023

TOPMOUNT WORKSTATION SINK

RUVATI®
SPECIFICATION SHEET

MATERIAL

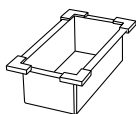
True 16 Gauge Thickness
Premium T304 Grade Stainless Steel
18/10 Chromium/Nickel Content
Commercial Brushed Finish

FEATURES

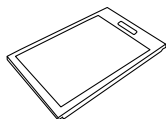
- Heavy duty sound guard padding and undercoating
- Slanted bottom with elegant drain grooves for easy draining
- Single-Tier Ledge for Accessories



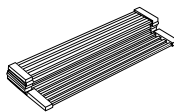
IN THE BOX



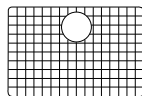
Colander
[RVA1327]



Cutting Board
[RVA1217]



Folding Rack
[RVA1395]



Rinse Grid
[RVA68023]



Basket Strainer
[RVA1025]



Drain Cover
[RVA1035]



Mounting Clips
[RVA11042]



Cut-out
Template

NOMINAL DIMENSIONS

Exterior: 25" (wide) x 22" (front-to-back)

Interior Bowl: 23" (wide) x 16" (front-to-back)

Bowl Depth: 10"

Minimum Cabinet Size: 27" wide

Drain Hole Size: 3-1/2"

Installation Type:
Topmount

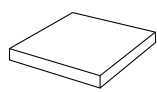
Inside Corners:
Rounded

Drain Location:
Rear Center

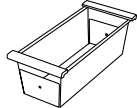
RUVATI USA
www.ruvati.com

Phone: 1.855.478.8284
Email: support@ruvati.com

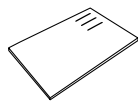
OPTIONAL ACCESSORIES (SOLD SEPARATELY)



Butcher Block
[RVA2445ACA]



Colander
[RVA1317]



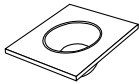
Cutting Board
[RVA1217CR]



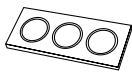
Caddy
[RVA1580]



Caddy Drying Rack
[RVA1542]



Mixing Bowl
and Platform
[RVA1288]



Condiment
Serving Tray
[RVA1377]



Deep Basket
Disposal Flange/Stopper
[RVA1052ST]

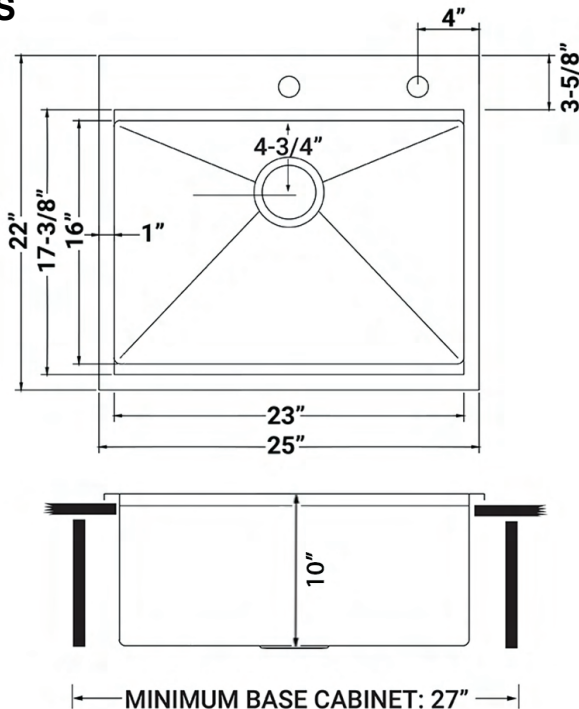


Garbage Disposal
Flange/Stopper
[RVA1042ST]



Deep Basket Strainer
and Stopper
[RVA1027ST]

DIMENSIONS





cUPC certified by IAPMO
to meet US and Canada
plumbing standards.



**SCAN TO REGISTER
YOUR WARRANTY**

or visit
ruvati.com/register